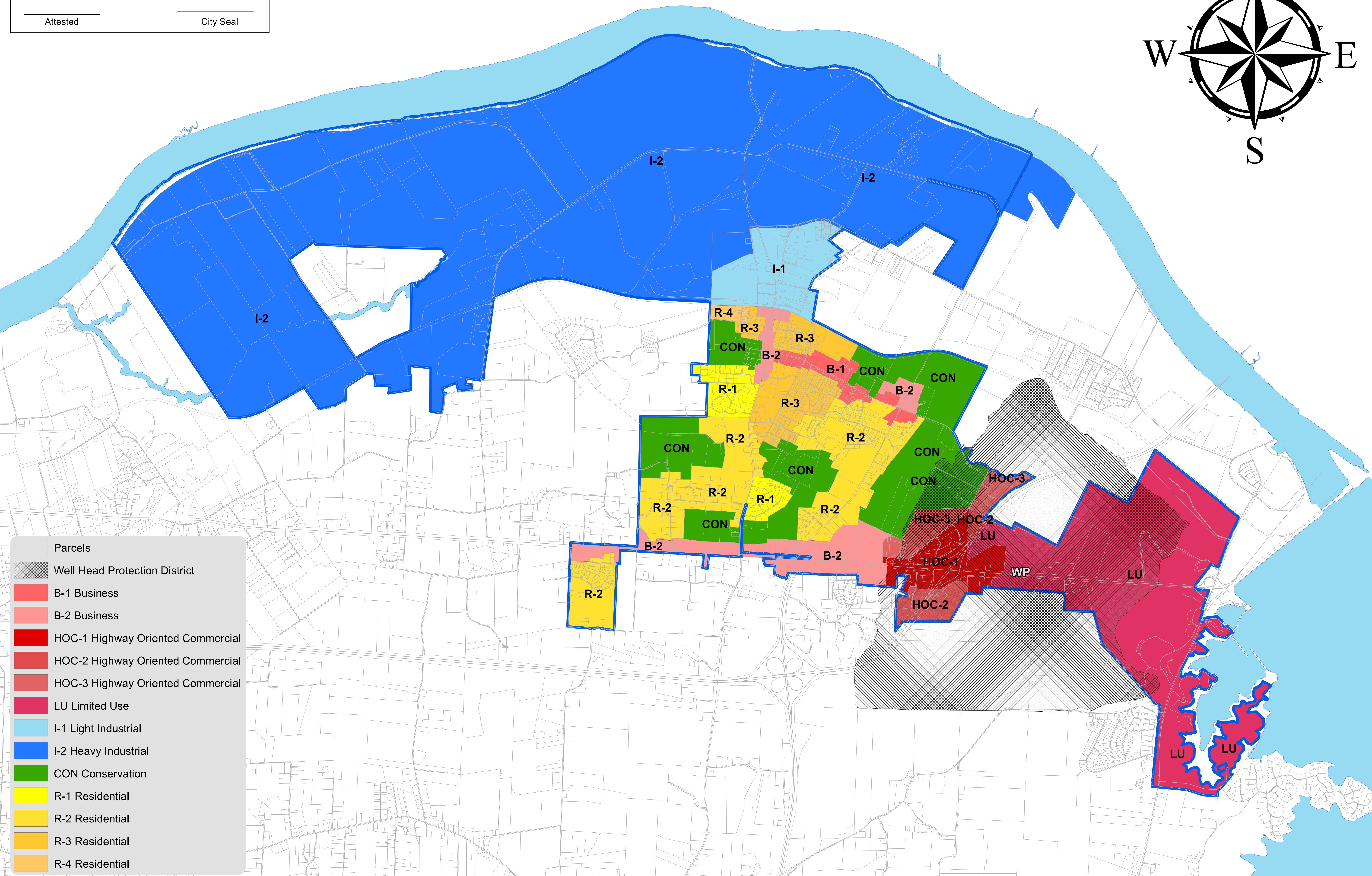
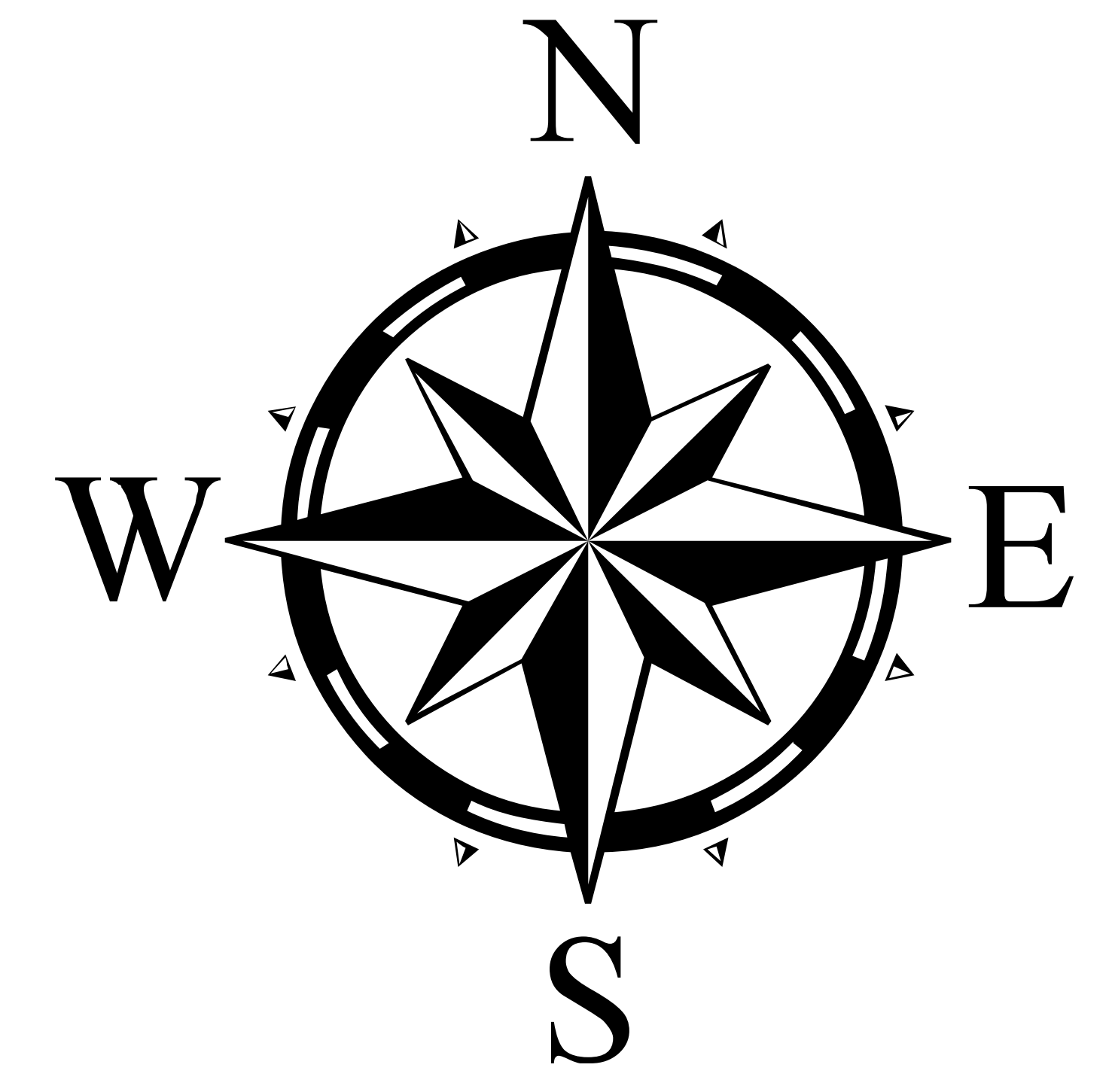


This is to certify that this is the Official Zoning Map of the City of Calvert City, Commonwealth of Kentucky, adopted by Ordinance Number 2017-06 and effective August 16th, 2017

Mayor

Attested

City Seal



- Parcels
- Well Head Protection District
- B-1 Business
- B-2 Business
- HOC-1 Highway Oriented Commercial
- HOC-2 Highway Oriented Commercial
- HOC-3 Highway Oriented Commercial
- LU Limited Use
- I-1 Light Industrial
- I-2 Heavy Industrial
- CON Conservation
- R-1 Residential
- R-2 Residential
- R-3 Residential
- R-4 Residential

1 inch = 1,250 feet
Date: 8/16/2017

Calvert City Official Zoning



Marshall County GIS
1101 Main Street
Benton, KY 42025
(270) 527-1321